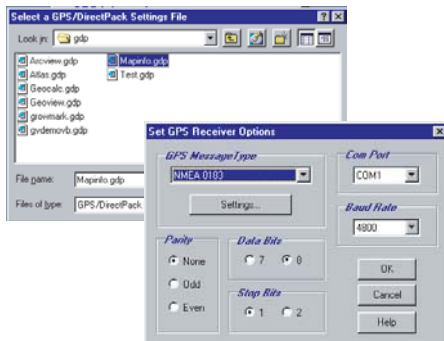


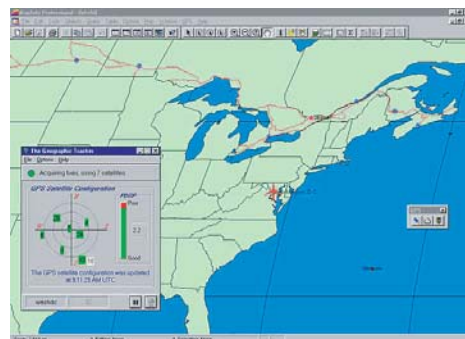
The Geographic Tracker[®]

The leading GPS interface tool for Windows!



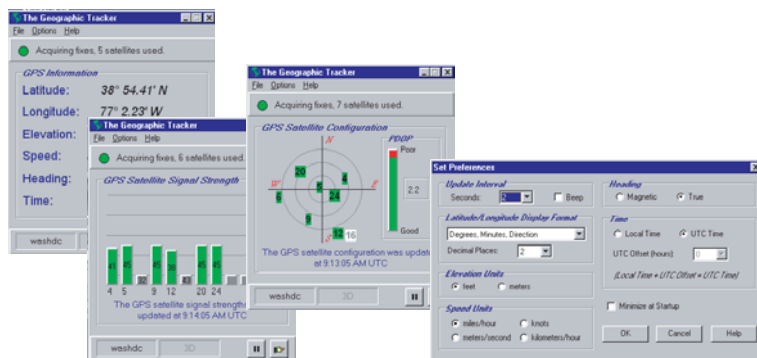
"As more software programs add GPS functionality, the Geographic Tracker remains my favorite because it is so flexible. The Tracker provides all the satellite information one needs while allowing any number of Windows applications to receive positioning information at the same time. Support for custom application development and range of signal connections makes this product simply unbeatable."

Mark Miller
Benchmark GIS



Install and Configure your GPS receiver

Use the instructions provided by your GPS receiver manufacturer to set up your receiver through your computer's serial port. Select the 'Set GPS receiver options' to view or edit the GPS message type. If your GPS information is not properly received, the Geographic Tracker will display additional instructions.



Flexible Licensing

Single user and Floating licenses are available.

Order Today!

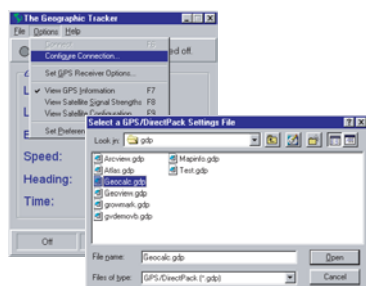
You can order and download the Geographic Tracker from our web site at

www.bluemarblegeo.com

You can also order by calling
800.616.2725

Useful Interface

Once you have configured the Geographic Tracker to the GPS receiver, various options are available to you. Quickly view GPS information, GPS satellite signal strengths, or GPS satellite configuration displays. The display within the information view area can be toggled by selecting the appropriate view from within the "Options" menu, or by clicking on the information view toggle button.



"We needed GPS connectivity to retain our competitive advantage. That's why we have been shipping the Geographic Tracker with every version of MapInfo Professional since 1995!"

Tom Muro
MapInfo

 **MapInfo**
Business Partner

 **BLUE MARBLE GEOGRAPHICS**
The Geographic Software Tool Company

Dynamic Data Exchange - GPS enable your Windows desktop!

The Tracker allows you to display a real-time GPS derived position directly on top of a map background in MapInfo. Link other apps directly to the Tracker, paving the way for simultaneous GPS display.

397 Water Street, Suite 100, Gardiner, Maine 04345 USA
(800) 616-2725 Fax: (207) 582-7001

Latitude 44° 13' 47.53" N Longitude 69° 46' 29.11" W

www.bluemarblegeo.com

Dynamic Data Exchange

DDE Advise/Request Items

- ◆ Latitude
- ◆ Longitude
- ◆ Eheight - ellipsoidal height
- ◆ Gheight - geoid height
- ◆ Speed
- ◆ Heading
- ◆ PDOP - position dilution of precision
- ◆ Time - the current UTC or Local time
- ◆ Depth - water depth in meters
This variable is only output if the NMEA 0183 message type is selected and a serial port multiplexor is used to interface to output from a depth sounder.

DDE Execute Command Support

- ◆ Off - GPS communications off
- ◆ Live - GPS communications on
- ◆ Play "file" - turns GPS communications on in simulated mode
File must specify the fully qualified path name of a valid GPS simulation file.
- ◆ Pause - pauses a GPS simulation file
- ◆ Forward - resumes a GPS simulation file
- ◆ Exit - terminates the Geographic Tracker

DDE Connection Samples

- ◆ Visual Basic Samples
- ◆ MapBasic Source Code
- ◆ Avenue Source Code

New in 3.3

New Features in Version 3.3

- ◆ Garmin Protocol support
- ◆ Garmin USB native support
- ◆ Baud rate maximum speed increased to 57600
- ◆ Pure MSI installation for MapInfo version

GPS Protocols

Trimble Support

- ◆ TSIP (Trimble Standard Interface Protocol)
- ◆ TAIP (Trimble ASCII Interface Protocol)

NMEA Support

- ◆ NMEA 0183

Application Links

Configure and Link to these Applications

- ◆ ArcView
- ◆ MapInfo
- ◆ Visual Basic
- ◆ Microsoft Excel

Trimble Support

Trimble TSIP Sentence Support

- ◆ 0x41 - GPS time
- ◆ 0x42 - single precision XYZ
- ◆ 0x43 - velocity, XYZ
- ◆ 0x44 - satellite selection
- ◆ 0x45 - software version
- ◆ 0x46 - health
- ◆ 0x47 - signal levels
- ◆ 0x4A - single precision lat/lon/alt
- ◆ 0x4B - additional status
- ◆ 0x56 - velocity east/north/up
- ◆ 0x5C - satellite tracking status
- ◆ 0x6D - all in view satellite selection
- ◆ 0x83 - double precision XYZ
- ◆ 0x84 - double precision lat/lon/alt

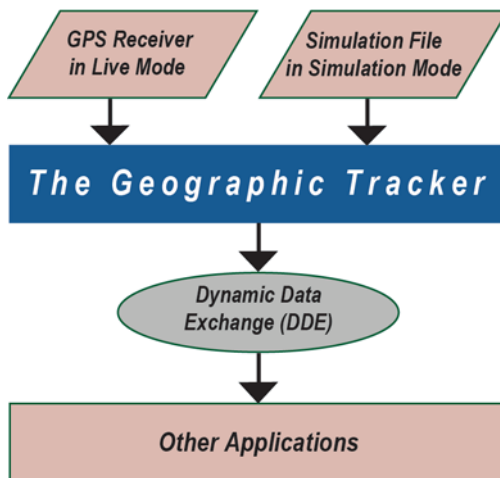
Trimble TAIP Sentence Support

- ◆ LN - position
- ◆ ST - status
- ◆ TM - time

NMEA Support

NMEA 0183 Sentence Support

- ◆ GGA - GPS fix data
- ◆ GLL - geographic position
- ◆ GSA - DOP and active satellites
- ◆ GSV - satellites in view
- ◆ RMA - recommended minimum specific Loran-C data
- ◆ RMC - recommended minimum specific GPS/Transit data
- ◆ STN - multiple data ID
- ◆ VTG - track made good and ground speed
- ◆ ZDA - time and date
- ◆ DPT - depth
- ◆ DBT - depth below transducer



397 Water Street, Suite 100
Gardiner, ME, 04345 USA
(207) 582-6747 Voice
(207) 582-7001 Fax