



# GlobalMapper

GIS, only better

## Does your GIS software include all of this?

- Support for more than 300 geospatial data formats
- Access to hundreds of built-in online data services
- Extensive vector creating and editing tools
- Attribute management and thematic mapping
- 3D visualization and terrain modeling
- Raster calculation
- Free mobile app for field data collection
- Watershed delineation and flood modeling
- Viewshed and line-of-sight analysis
- LiDAR processing tools
- Custom contour line generation
- Raster and image rectification
- Advanced projection management
- Scripting and batch processing
- On-screen GPS tracking
- Free technical support

Try a **FREE** trial at  
[globalmapper.com](http://globalmapper.com)

Inside, learn more about Global Mapper, the LiDAR Module, Global Mapper Mobile, and Blue Marble's support services.

**Global Mapper does it all for under \$550.**



**Blue Marble GEOGRAPHICS**  
*Mind the gap between world and map™*



# GlobalMapper

## GLOBAL MAPPER HIGHLIGHTS



Digitizing parcel boundaries on high-resolution imagery

### Built-In Online Data Access

Support for more than 300 data types and online access to datasets for the entire world

### 3D Rendering & Elevation Modeling

Rendering of 3D data, from point clouds to digital elevation models

### Point Cloud Processing Tools

Creation of accurate gridded surface models from point clouds with more than billion points

### Energy Features

Energy features that range from oil and gas symbology to volumetric calculation

### Scripting & Batch Processing

Automation of most routine data processing functions using simple, text-based scripts or the built-in Batch Processing tool

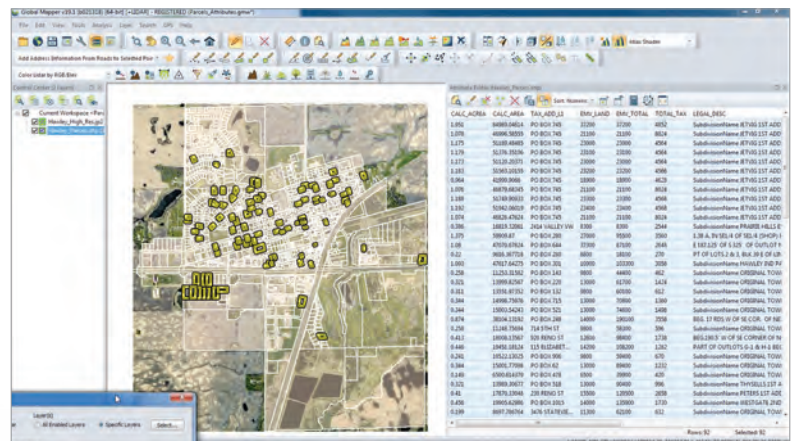
## GIS, only better

Global Mapper is a robust GIS application that combines a comprehensive array of spatial data processing tools with access to an unparalleled variety of data formats at a genuinely affordable price.

Developed for both GIS professionals and map enthusiasts, Global Mapper has virtually everything you need in a GIS:

- Complete interoperability with exceptional data support
- Powerful data processing in an intuitive interface
- Straightforward installation and setup
- Unlimited technical support

► [Learn more at globalmapper.com](http://globalmapper.com)



**Above:** Multivariate queries of vector data attributes can be performed in Global Mapper using a wide variety of expressions and functions.

**Left:** A 3D view of a wind farm in Global Mapper.



# LiDAR Module



## Advanced point cloud and LiDAR processing

The LiDAR Module is an optional add-on to Global Mapper that provides advanced point cloud processing tools, including: **Pixels-to-Points™** for photogrammetric point cloud creation from an array of overlapping images; automatic point cloud classification; feature extraction; hydroflattening; and more.



LiDAR points representing powerlines can be automatically reclassified.

### LIDAR MODULE HIGHLIGHTS

#### Pixels-to-Points Tool

- Point cloud creation from aerial images
- 3D mesh generation

#### Manual Point Classification Tools

#### Automatic Point Classification Tools

- Ground
- Noise
- Buildings
- Trees
- Above ground utility cables

#### Automatic & Custom Feature Extraction

- Buildings
- Trees
- Above ground utility cables

#### Point Cloud Thinning

#### Point Filtering Options

#### LiDAR Quality Control for Vertical Accuracy

#### Point Cloud Colorization Options

- From raster imagery
- By point type/class/value

#### Path Profile (side-view) Editing

#### Elevation Grid Creation



Extend the reach of your GIS by taking your Global Mapper data to the field. Global Mapper Mobile is a free app for iOS and Android devices that offers field viewing and data collection.

### GLOBAL MAPPER MOBILE HIGHLIGHTS

- Displays any supported data from the desktop software
- Streamlines data collection
- Efficiently transfers data into the desktop software







## Training Opportunities

### CUSTOMIZED SESSIONS

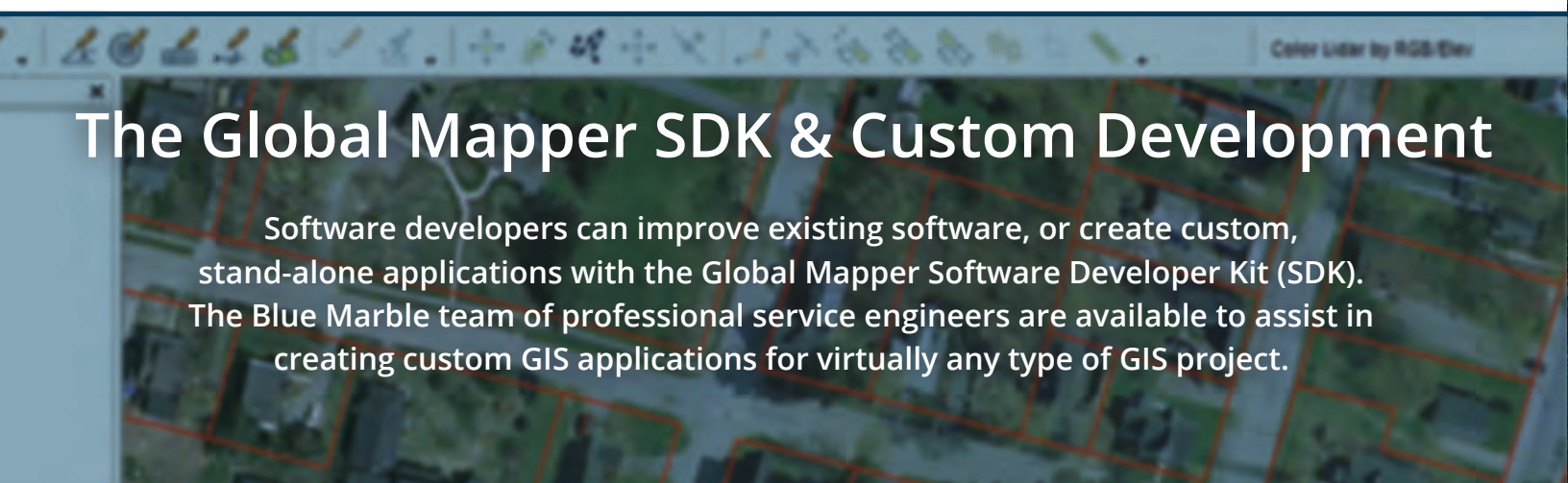
A tailored curriculum focused on the needs of a company or organization

### PUBLIC SESSIONS

A hands-on class for GIS pros and beginners, leading to Global Mapper certification

### SELF-GUIDED SESSIONS

Downloadable series of instructions and GIS data for learning at one's own pace



## The Global Mapper SDK & Custom Development

Software developers can improve existing software, or create custom, stand-alone applications with the Global Mapper Software Developer Kit (SDK). The Blue Marble team of professional service engineers are available to assist in creating custom GIS applications for virtually any type of GIS project.

## Technical Support

### APPLICATION SUPPORT

#### Submit a Question

[blumarblegeo.com/support/support.php](http://blumarblegeo.com/support/support.php)

#### Email Us

[geohelp@blumarblegeo.com](mailto:geohelp@blumarblegeo.com)

### VIDEOS

#### Visit Our Website

[blumarblegeo.com/products/webinars.php](http://blumarblegeo.com/products/webinars.php)

#### Visit Our YouTube Channel

[youtube.com/user/BlueMarbleWebinars](http://youtube.com/user/BlueMarbleWebinars)

### OTHER RESOURCES

#### Knowledge Base

[blumarblegeo.com/knowledgebase/index.php](http://blumarblegeo.com/knowledgebase/index.php)

#### Global Mapper Forum

[globalmapperforum.com](http://globalmapperforum.com)