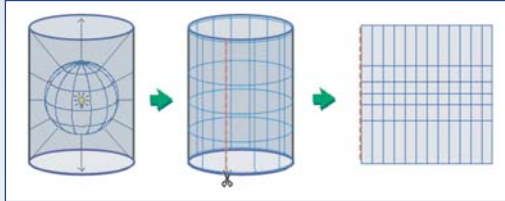


APPLIED GEODESY AND IN-DEPTH SOFTWARE TRAINING

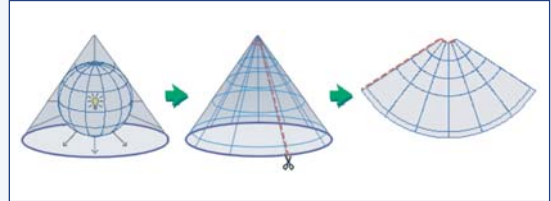
Is Geodesy a mystery? Get back to the basics with Blue Marble

LEAVE YOUR GEODESY HEADACHES BEHIND!

Why try to figure it out for yourself? Blue Marble Geographics has been creating geographic software for many years, and we've probably run into the same challenges that you face every day. Blue Marble now offers a world-class Geodesy training course that explains the basics like nobody else. We guarantee that after leaving the classroom, you will come away with a solid understanding about what a datum really is, how an ellipsoid is really flattened, and which map projection best suits your current GIS project. Whether you are looking for an introduction to geodesy or a refresher course, we can tailor it to your needs.



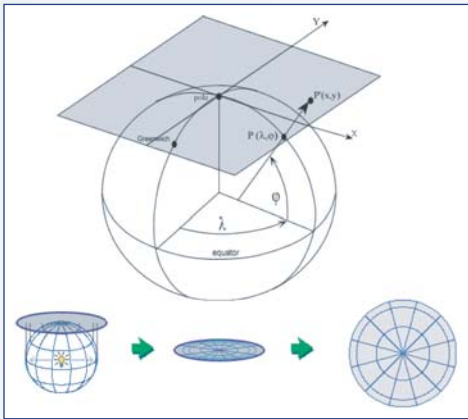
Cylindrical map projection



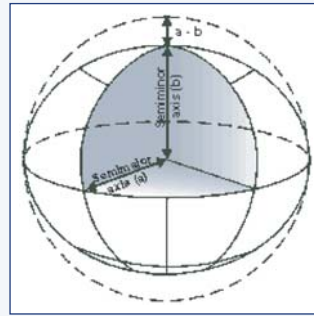
Conic map projection

HOW SIMPLE IS IT?

Well, unfortunately geodesy is not a simple subject. Many times we find that although geodetic principles can be taught in a classroom, direct application to real world examples really brings the message home. All geodesy really comes down to is the application of 2D and 3D mathematics. Our course outlines how these principles work, and how our software can help you solve your geodetic problems. We offer geodesy training in conjunction with our Geographic Calculator, our Geographic Transformer, or simply by itself.



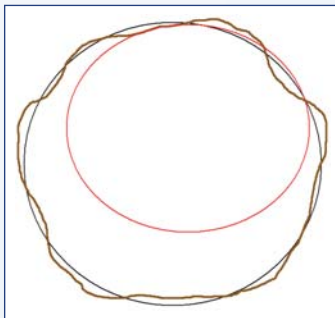
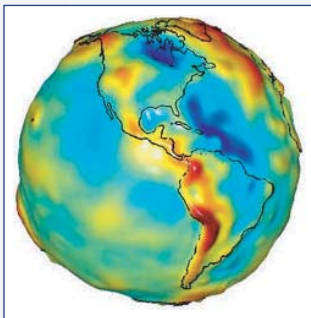
Planar and Azimuthal map projections



Ellipsoid flattening

BENEFITS OF GEODESY TRAINING

- Educating your staff in geodesy will lead to better decision making.
- Reduce/eliminate the outsourcing of expensive consulting firms.
- Streamline your process, and work smarter and faster to bring down your operating costs.



Geoid model and various geodetic surfaces explained

WHY DO WE NEED GEODESY TRAINING?

Many types of professionals can receive immediate benefits from our training courses. Land surveyors, engineers, GIS experts and existing Blue Marble geographic software users are all perfect candidates for geodesy training. If you have a fairly large staff that utilizes GIS software, why run the risk of poor or hasty decisions that can waste your organization's time and money? Blue Marble can provide training courses on-site, remotely, or in conjunction with key industry conferences and seminars. Contact your Blue Marble representative today to coordinate your next session. Put our experience to work for you.

In-depth Software Training to Leverage the Full Power of Blue Marble is Also Available



BLUE MARBLE GEOGRAPHICS

MIND THE GAP BETWEEN WORLD AND MAP

397 WATER STREET, SUITE 100, GARDINER, MAINE 04345 USA

800.616.2725 / +1.207.582.6747 / FAX: 207.582.7001

44° 13' 49.50" N, 69° 46' 32" W, WGS84

WWW.BLUEMARBLEGEO.COM

SOFTWARE TRAINING FROM BLUE MARBLE

In-depth Software Training to Leverage the Full Power of Blue Marble and Global Mapper

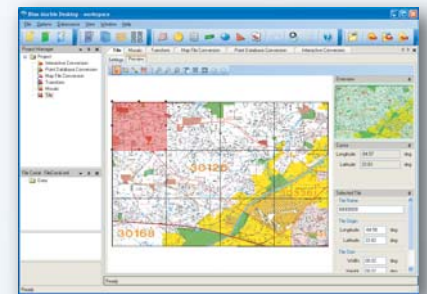


At Blue Marble, we are pleased to offer a choice of training options to help maximize the value of your investment in our products. Both classroom-based and online instructor-led sessions are available on an open enrollment or on a customer-specific basis. Open enrollment classes are typically arranged at locations where there is a large concentration of Blue Marble software users while customer-specific classes can be organized at a location, and on a schedule, that meets the needs of those being trained.

**Developer Tool
Training Available
on Request**

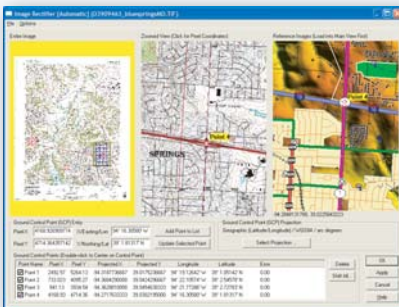
BLUE MARBLE DESKTOP TRAINING

The Blue Marble Desktop is a comprehensive enterprise solution for managing geospatial data transformation, translation and access. The Blue Marble Desktop has a number of collaborative tools to optimize the central management of proprietary coordinate system parameters. One, two and even three day curriculums are available. Users can be training on the Desktop as a whole or the individual Geographic Calculator and Transformer modules. The Spatial Connect module training is part of the Calculator training. Typically Blue Marble Desktop training is offered as a two day course with an introduction/basic user curriculum for day one and a more advanced user curriculum for day two. Day one can include applied geodesy training or not. Day two can include an advanced workshop on implementation options, administrative tools set up, geodetic datasource access and control and a host of geospatial data workflow tools.



Global Mapper

Global Mapper is a powerful GIS translation, viewing and manipulation tool. This tool has allowed Blue Marble to expand its training offerings and to extend its instructional expertise to a new set of customers. While Global Mapper enjoys a well-deserved reputation as an easy-to-use GIS management tool, our formal instruction program has been designed to help both new users and GIS professionals get the most out of the software while offering countless valuable tips and tricks. Training can include a one or two day curriculum. Day one typically is an introduction to the software covering file format translation, editing, joining, basic and thematic map creation and other map creation tools. Day two covers more advanced tools like 3D data manipulation, and spatial analysis tools such as view shed, line of site, watershed, slope and more.



UPCOMING TRAINING DATES & LOCATIONS

For more information on software training please visit our website where you can register online, download signup forms or read more about our training offering. Contact us directly at Training@bluemarblegeo.com or call 800-616-2725.

**Web Based
Training Available
on Request**



BLUE MARBLE GEOGRAPHICS

MIND THE GAP BETWEEN WORLD AND MAP

397 WATER STREET, SUITE 100, GARDINER, MAINE 04345 USA
800.616.2725 / +1.207.582.6747 / FAX: 207.582.7001
44° 13' 49.50" N, 69° 46' 32" W, WGS84

WWW.BLUEMARBLEGEO.COM