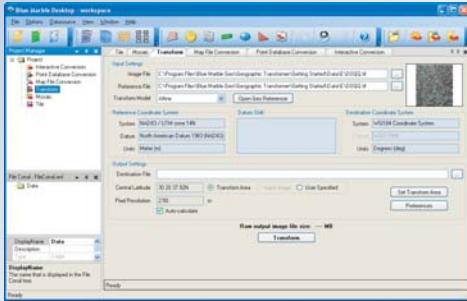


THE GEOGRAPHIC TRANSFORMER BLUE MARBLE DESKTOP TOOL

Highly Accurate, Reliable, and Powerful Data Processing



BLUE MARBLE DESKTOP

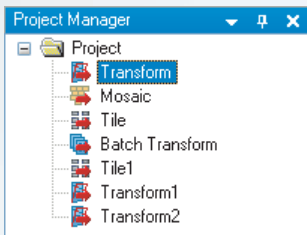
Geographic Transformer resides in the same desktop window as the Geographic Calculator. Work seamlessly with all of the features of both applications in a single interface through a combined license.



- Create jobs, projects and workspaces.
- Share your projects with co-workers.
- Leverage the power of the latest GeoCalc data source.
- Powerful viewers.
- Easy to use cropping, tiling and mosaicking tools.

TRANSFORM YOUR IMAGE FILES WITH UNBEATABLE ACCURACY

The most powerful raster transformation tools allowing higher order math transformation models, up to 5th order polynomial, for true warping and accurate reprojection. Leverage the largest, most flexible coordinate conversion library and the Blue Marble reputation for reliability.



PROJECT MANAGER AND ADMIN TOOLS

The Project Manager allows the user to switch back and forth between multiple conversion projects. Admin tools lock down the data source for protection. Workspaces ensure consistency and permit sending out pre-defined jobs to co-workers. The new file corral allows users to manage data locally or remotely.

THE MOST COMPREHENSIVE DATA SOURCE AVAILABLE!

- XML Based
- Over 3500 pre-defined projected coordinate systems
- Over 1200 datum shifts
- Over 400 horizontal datums
- Over 80 various unit definitions
- A dozen vertical datums (necessary for LiDAR transformations)
- Full matches to ESRI, MapInfo, Autodesk and many more
- Define your own coordinate systems!

COMPREHENSIVE RASTER TOOLS

- DTED and DEMs support, including support for the Shuttle Radar Topography Mission (SRTM) height format, as well as support for all the major GIS raster formats including Tiff, GeoTiff, MrSID, ECW, JPEG2000 and much more.
- Georeferencing through point and click tools or manual point definition.
- Use any datum as an intermediary for datum transformations for more accurate transformations.
- Assign coordinates to an image in the Georeferencer and perform Projection Recovery to determine unknown projections.
- True vertical geoid transformations of 3D raster datasets.
- Colorize and hillshade DEM datasets using customizable schemes.

Write Compressed Files to JPG2000, MrSID, or ECW. Still the ONLY raster tool that allows read and write to all of the major compression formats.



POWERFUL BATCH TOOLS WITH ENHANCED PERFORMANCE



- Improved performance of batch processing for large jobs and projects.
- Tiling tools for easier and more powerful tile set creation.
- Enhanced Mosaic functions including input image cropping, output mosaic cropping, and preview tools.
- Georeferencer tool, with reference models up to 5th order polynomial.
- Optimized viewer and drawing functionality for faster loading and viewing of data.
- File Corral tool that allows the user quick access to common map images and data, whether stored on a local hard drive or a central server.
- Import and Export Geodetic definition tool to quickly share custom coordinate system definitions with other users.
- Message window that monitors current projects, giving the user frequent updates on image processing.

ORDER TODAY:

You can order and download Geographic Transformer from our website at WWW.BLUEMARBLEGEO.COM
Or call: 207.582.6747 800.616.2725 (U.S. & CANADA ONLY)



BLUE MARBLE GEOGRAPHICS

WHERE GIS DATA CONVERSION SOLUTIONS ARE BORN

397 WATER STREET, SUITE 100, GARDINER, MAINE 04345 USA
800.616.2725 / +1.207.582.6747 / FAX: 207.582.7001
44° 13' 49.50" N, 69° 46' 32" W, WGS84

WWW.BLUEMARBLEGEO.COM

NEW FEATURES

FEATURE ENHANCEMENTS

- Optimized viewer and drawing functionality for faster loading and viewing of data
- Improved performance of batch processing for large jobs and projects
- Digital Elevation Model support, including the SRTM height format
- DTED Military Elevation support
- True vertical geoid transformations of 3D raster datasets
- Colorize and hillshade DEM datasets
- Updated raster processing for more streamlined batch data conversions
- Projection Recovery for raster images to determine unknown projections
- ESRI GTF transformation file import
- Enhanced JPEG2000, ECW, MrSID, and GeoTIFF handling
- File Corral tool for quickly working with your common data
- Import and export Geodetic definitions tool to quickly share custom definitions with other users
- Workspace Export tool makes workspaces more easily portable
- Updated progress bars
- Ability to use any datum as an intermediary for datum transformations
- Message window to monitor currently running projects
- Tiling tools for easier and more powerful tile set creation
- Enhanced Mosaic functions including, input image cropping, output mosaic cropping, and preview tools

WHAT'S INSIDE

IMAGE TRANSFORMATION MODELS

- Affine (minimum three points)
- 1st Order Polynomial (minimum four points)
- 2nd Order Polynomial (minimum six points)
- 3rd Order Polynomial (minimum ten points)
- 4th Order Polynomial (minimum fifteen points)
- 5th Order Polynomial (minimum twenty-one points)

DATUM TRANSFORMATION METHODS

18 Datum Shift Methods such as 7 parameter (coordinate frame rotation or position vector rotation), Moledensky Badekas 10 parameter, NTv2, HARN, etc.

DATA FILE FORMATS

SUPPORTED INPUT IMAGE FILE FORMATS

- ARC Digitized Raster Graphics (*.img, *ovr)
- BIL/HDR Raster Dataset (*.bil)
- Bitmap Files (*.bmp)
- BSQ Files (*.bsq)
- Compressed ARC Digitized Raster Graphics
- Enhanced Compressed Wavelet (*.ecw)
- Graphics Interchange Format (*.gif)
- JPEG (*.jpg)
- JPEG 2000 (*.jp2)
- LizardTech MrSID (*.sid)
- Portable Network Graphics (*.png)
- BSB v3 - KAP
- TIFF and GeoTIFF (*.tif)

SUPPORTED OUTPUT IMAGE FILE FORMATS

- Bitmap Files (*.bmp)
- Enhanced Compressed Wavelet (*.ecw)
- JPEG (*.jpg)
- JPEG 2000 (*.jp2)
- LizardTech MrSID (*.sid)
- Portable Network Graphics (*.png)
- TIFF and GeoTIFF (*.tif)

IMAGE REFERENCE FORMATS

- Blue Marble (RSF)
- BIL/HDR Reference Files (.HDR)
- World files (various file extensions)
- MapInfo Raster (TAB)
- ECW Reference File (ERS)
- Internal Referencing (GeoTiff, ECW, JP2, MrSID, CADRG, ADRG, DOQQ, etc.)

DIGITAL ELEVATION MODEL SUPPORTED FORMATS

- Arc/Info Ascii Grid (*.asc)
- Arc/Info Binary Grid (*.adf)
- DTED Military Elevation (*.dt0, *.dt1, *.dt2, *.dt3, *.dt4, *.dt5)
- USGS SDTS DEM (*.ddf)
- USGS ASCII DEM (*.dem)

MAP PROJECTIONS

- Aitoff
- Alaska 27
- Albers Equal Area
- Azimuthal Equal Area
- Azimuthal Equidistant
- Behrmann
- Belgium 72
- Bipolar Oblique Conformal Conic
- Bonne
- Cassini
- Craster Parabolic
- Danish System 34
- Danish System 34 1999

(continued)

MAP PROJECTIONS

(continued)

- Double Stereographic
- EckertI, EckertII, EckertIII
- EckertIV, EckertV, EckertVI
- Egyszeges Orszagos Vetulet
- Equal Area Cylindrical
- Equidistant Conic
- Equidistant Cylindrical
- European Stereographic
- Fuller
- Gall Stereographic
- Gnomonic
- Goode Homolosine
- Guam 27
- Hammer Aitoff
- Hotine Oblique Mercator
- Hotine Oblique Mercator 1pt
- Hotine Oblique Mercator 1pt Method2
- IMW Polyconic
- Krovak
- Laborde
- Lambert 27
- Lambert Conformal Conic
- Lambert Conformal Conic Extended
- Lambert Tangent
- Loximuthal
- McBryde Thomas Flat Polar Quartic
- Mercator
- Military Grid Reference System
- Miller Cylindrical
- Mollweide
- New Zealand Map Grid
- Oblique Mercator Azimuth
- Oblique Mercator Two Points
- Orthographic
- Perspective Conic
- Polar Azimuthal Equal Area
- Polar Equidistant
- Polar Stereographic
- Polyconic
- Quartic Authalic
- Robinson
- Sinusoidal
- Space Oblique Mercator
- Stereographic
- Stereographic 70
- Swiss Oblique Mercator
- Tilted Perspective
- Times
- Transverse Mercator
- Transverse Mercator 27
- Transverse Mercator Extended
- Transverse Mercator Snyder
- Transverse Mercator South Oriented
- Two Point Fit
- Universal Transverse Mercator
- Van Der Grinten
- Van Der Grinten IV
- V and H
- Vertical Perspective
- Winkel I
- Winkel II
- Winkel Tripel



BLUE MARBLE GEOGRAPHICS

WHERE GIS DATA CONVERSION SOLUTIONS ARE BORN

397 WATER STREET, SUITE 100, GARDINER, MAINE 04345 USA
800.616.2725 / +1.207.582.6747 / FAX: 207.582.7001
44° 13' 49.50" N, 69° 46' 32" W, WGS84

WWW.BLUEMARBLEGEO.COM