

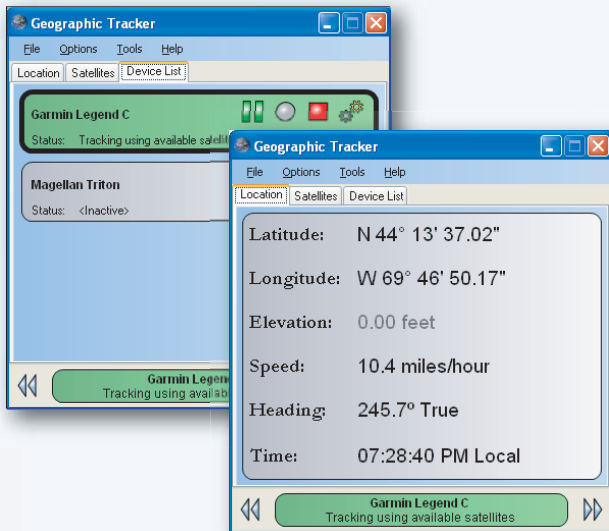
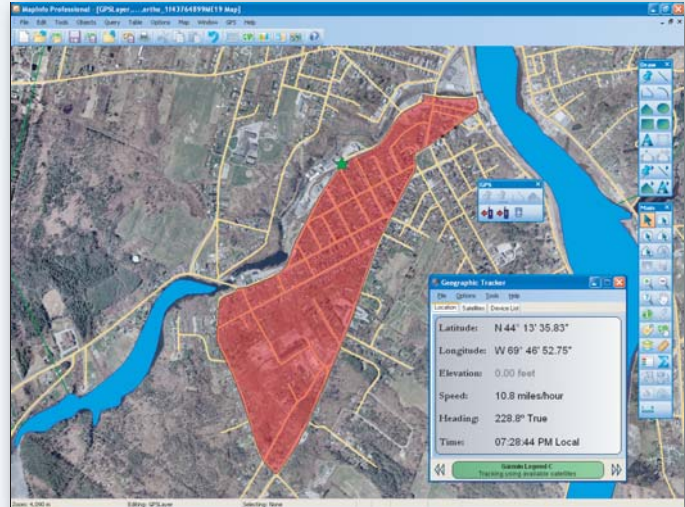
THE GEOGRAPHIC TRACKER

The leading GPS interface tool for Windows!

The Geographic Tracker is a GPS application that supports streaming of live GPS position data, playback of recorded GPS log files and transfer of spatial data both to and from various GPS units.

Use Within MapInfo

The Geographic Tracker MBX allows MapInfo users to coordinate Geographic Tracker with MapInfo Professional. GPS data can be viewed live in MapInfo, or replayed from log files. Coordinate data can be recorded as points, polylines, or polygons in MapInfo tables. Users can also transfer data between MapInfo tables and Geographic Tracker's Path Manager. The Geographic Tracker includes MapBasic code as well, to allow writing custom applications around the Tracker's core GPS tracking functionality.

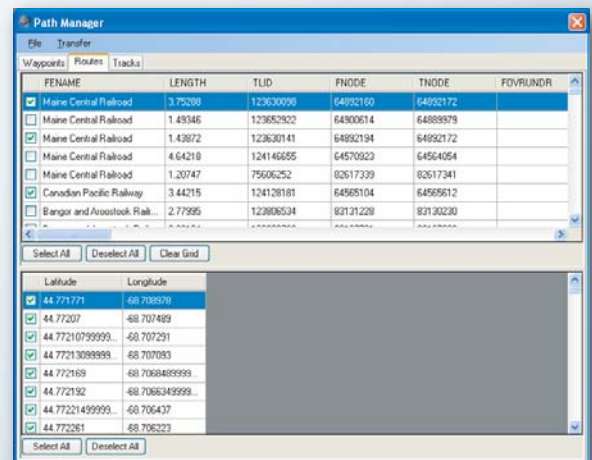


Path Manager

Geographic Tracker's Path Manager allows users to import coordinate data from files or download waypoints, routes, and tracks from a GPS unit. From the Path Manager, this coordinate data can be exported in a different file format or uploaded to the GPS unit.

Live GPS Connections

Geographic Tracker reads GPS information from a GPS receiver, decodes the information into component parts such as Latitude, Longitude, Time, Speed, Heading, etc., and displays the information in an intuitive and useful user interface. Users can also save or view GPS log files through Geographic Tracker's interface.



BLUE MARBLE GEOGRAPHICS

MIND THE GAP BETWEEN WORLD AND MAP

397 WATER STREET, SUITE 100, GARDINER, MAINE 04345 USA

800.616.2725 / +1.207.582.6747 / FAX: 207.582.7001

44° 13' 49.50" N, 69° 46' 32" W, WGS84

WWW.BLUEMARBLEGEO.COM

FEATURES

NEW AND ENHANCED FEATURES

General

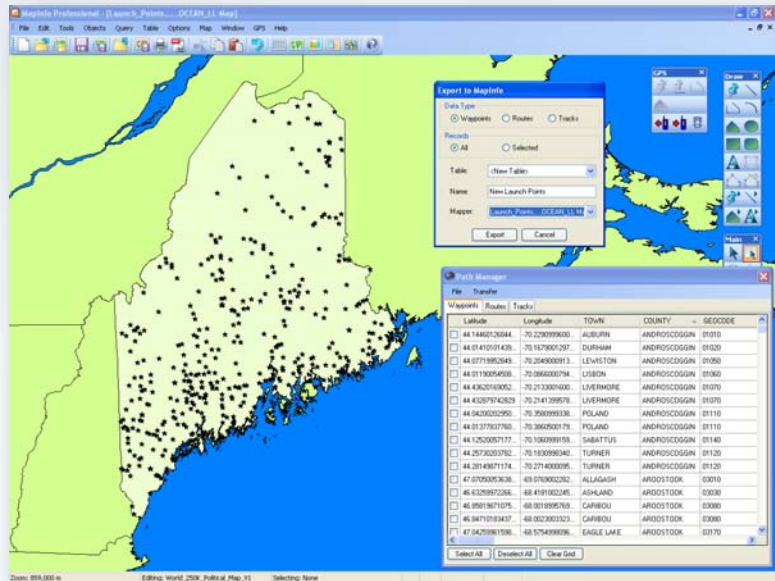
- Multiple GPS connection support
- Profiles for working with multiple GPS units on the same computer or sharing profiles between users/computers
- Extended logging support for non NMEA data streams
- Support for Trimble TAIP protocol
- Enhanced support of Trimble TSIP and Garmin protocols
- Faster than real time GPS log playback options

Path Manager Tool

- Import/Export of Waypoint, Route and Track data between open MapInfo Tables, GPS units, and GIS data formats (TAB, MIF, SHP, XLS, CSV, GPX, KML).
- Column mapping to facilitate merging GPS data into existing tables
- Pick list for partial import or export of Waypoints, Route, and Track data

MapInfo MBX Tool

- Import/Export from MapInfo to Path Manager via toolbar
- Create Polygon tool
- Record Offset point tool
- Track GPS location in non-WGS84-based Mapper windows



PROTOCOLS

PROTOCOLS

- Garmin
- MBP
- NMEA
- TAIP
- TSIP

CONNECTIONS

GPS CONNECTION METHODS

- COM
- USB

FORMATS

INPUT AND OUTPUT FOR WAYPOINT, ROUTE AND TRACK

- Comma Separated Values (*.csv) for waypoints only
- Esri Shape (*.shp) point files for waypoints or polyline files for routes or tracks
- Excel (*.xls) for waypoints only
- GPS exchange (*.gpx)
- Keyhole Markup Language (*.kml, *.kmz)
- MapInfo Interchange (*.mif)
- MapInfo TAB (*.tab)

COMING IN TRACKER IN 2010

- Multiple remote unit tracking
- GeoRSS support for services such as Twitter
- Smartphone Tracker application including the iPhone
- Attribute and position data transfer via remote units
- Enhanced support for Magellan GPS units
- WiFi and Cellular support
- Ability to post location messages to social location services such as Twitter (from the smartphone application or GPS-connected Tracker)



BLUE MARBLE GEOGRAPHICS

MIND THE GAP BETWEEN WORLD AND MAP

397 WATER STREET, SUITE 100, GARDINER, MAINE 04345 USA
800.616.2725 / +1.207.582.6747 / FAX: 207.582.7001
44° 13' 49.50" N, 69° 46' 32" W, WGS84

WWW.BLUEMARBLEGEO.COM