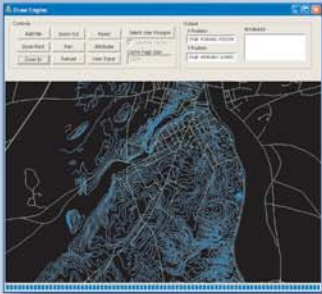


GEOTRANSLATE™ DEVELOPER TOOL

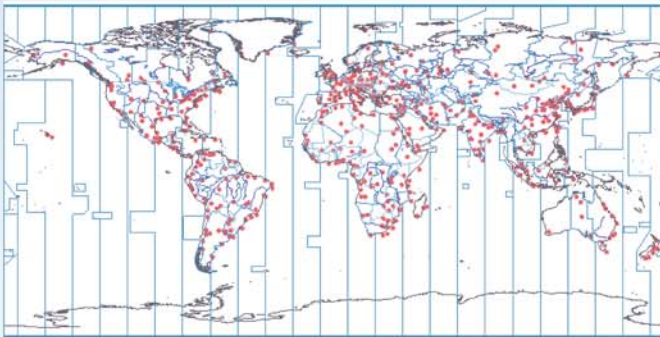
Vector Translation and Feature Manipulation for Developers



EASILY ADD FEATURE MANIPULATION TO YOUR CUSTOM APPLICATION!

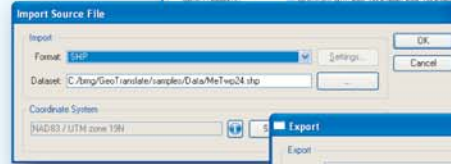
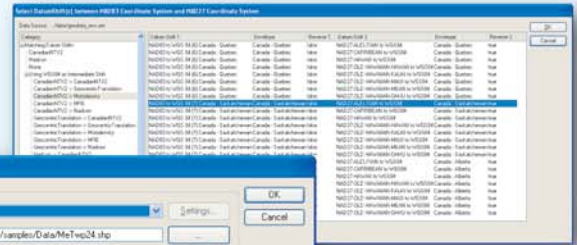
With this tool kit, users can read and write many of today's most popular GIS and CAD vector file formats. Users are also granted direct access to a wide variety of geometry objects, which can be created and manipulated on-the-fly. Along with these geometry objects, users are granted access to the metadata and attributes that are commonly associated with these features.

Give your Applications the ability to Manipulate Features on-the-fly!



TRANSLATE THE FORMATS THAT MATTER!

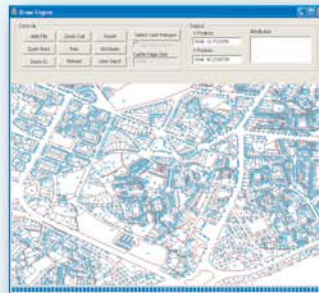
- Read and Write for over 20 formats
- Geometry manipulation
- Blue Marble coordinate conversion tools
- Available for Windows or Linux



Stock Dialogs are included to get your application up and running quickly.

STOCK DIALOGS

GeoTranslate contains stock dialogs that allow you to program your application quickly and easily. These tools are great for the GIS User that is not necessarily an expert developer. They are also a great starting point for the professional developer that wants to embed this tool quickly. Use our documentation and support team to speed up your release process with these dialogues as a launching point.



GEOCALC.XML

- Largest coordinate datasource available
- Direct match or support for EPSG, ESRI, MapInfo and Autodesk definitions

ACCURATE, RELIABLE AND POWERFUL

GeoTranslate leverages the coordinate conversion power of GeoCalc, which is recognized for its reliability, accuracy, and flexibility. It ensures that the transformations performed within GeoTranslate are as precise as possible.

COMPREHENSIVE COORDINATE CONVERSION PARAMETER DATABASE

GeoTranslate features an XML data source with pre-defined linear and angular units, ellipsoids, geodetic datums and coordinate systems. Over 12,000 coordinate system conversions are supported.



BLUE MARBLE GEOGRAPHICS

WHERE GIS DATA CONVERSION SOLUTIONS ARE BORN

397 WATER STREET, SUITE 100, GARDINER, MAINE 04345 USA 800.616.2725 FAX: 207.582.7001

LATITUDE 44 13' 47.53" N LONGITUDE 69 46' 29.11" W

WWW.BLUEMARBLEGEO.COM

FEATURES

OBJECT ORIENTED DESIGN PROVIDES ACCESS TO:

- Layers
- Features
- Geometry
- Attributes
- Metadata
- Block Definitions
- Coordinate System Definitions

SUPPORT FOR EXTERNAL COORDINATE SYSTEM DEFINITIONS

- Well-Known Text (WKT)
- ESRI PRJ
- MapInfo MAP/TAB
- EPSG Codes

XML DATA SOURCE WITH FIFTEEN OBJECT TYPES

- Angular units
- Linear units
- Prime Meridians
- Ellipsoids
- Horizontal datums
- Cartesian point styles
- Geodetic point styles
- Projected point styles
- Envelopes
- Datum shifts
- Geocentric coordinate systems
- Geodetic coordinate systems
- Fitted coordinate systems
- Projected coordinate systems
- Coordinate transformations

EPSG 6.12 SUPPORT

- Over 5,000 total EPSG objects
- XML data file
- Nearly 3,000 coordinate systems
- Over 700 datum transformations

MULTIPLE PLATFORM SUPPORT

- Windows
- Linux

WHAT'S INSIDE

COORDINATE TRANSFORMATION SUPPORT

- Support for more than 70 types of projections
- Support for more than a dozen classes of datum shifts
- Access to the current EPSG database, version 6.12
- Thousands and thousands of definitions for coordinate systems, datums, ellipsoids, datum shifts, units, and more

READ FORMATS

SUPPORTED READ FORMATS

- BML - Blue Marble Layer (windows version only)
- CSV - Comma Separated Values
- DBF - dBase DBF Format
- DGN - Bentley Microstation
- DLG - Digital Line Graph
- DWG - AutoCAD
- DXF - AutoCAD Export Format
- E00 - Arc Info Interchange
- GEN - Arc Info UnGenerate
- GML (SF) - Geographic Markup Language Simple Features Profile
- KML - Keyhole Markup Language (Google Earth)
- MIF - MapInfo Interchange Format S-57 - International
- Hydrographic Organization (IHO) Vector Interchange Format, also known as S-57 Nautical Charts
- SDTS - Spatial Data Transfer Standard
- SHP - ESRI Shapefile
- TAB - MapInfo TAB File
- TIGER/Line - U.S. Census Bureau
- TSV - Tab Separated Values
- TXT - ASCII Text
- XLS - Excel Spreadsheet

WRITE FORMATS

SUPPORTED WRITE FORMATS

- CSV - Comma Separated Values
- DBF - dBase DBF Format
- DGN - Bentley Microstation
- DWG - AutoCAD
- DXF - AutoCAD Export Format
- E00 - Arc Info Interchange
- GEN - Arc Info UnGenerate
- GML (SF) - Geographic Markup Language Simple Features Profile
- KML - Keyhole Markup Language (Google Earth)
- MIF - MapInfo Interchange Format
- SHP - ESRI Shapefile
- TAB - MapInfo TAB File
- XLS - Excel Spreadsheet

GEOMETRY OBJECTS

GEOMETRY OBJECTS INCLUDED

- Aggregate Area
- Aggregate Geometry
- Aggregate Linear
- Aggregate Point
- Area
- Donut
- Ellipse
- Linear
- Path
- Point
- Polygon
- Polyline
- Rectangle
- Rounded Rectangle
- Segment



BLUE MARBLE GEOGRAPHICS

WHERE GIS DATA CONVERSION SOLUTIONS ARE BORN

397 WATER STREET, SUITE 100, GARDINER, MAINE 04345 USA 800.616.2725 FAX: 207.582.7001

LATITUDE 44 13' 47.53" N LONGITUDE 69 46' 29.11" W

WWW.BLUEMARBLEGEO.COM