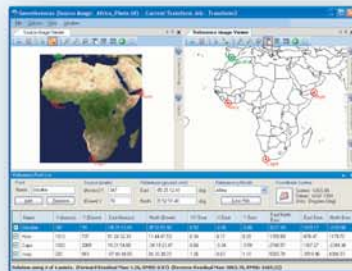
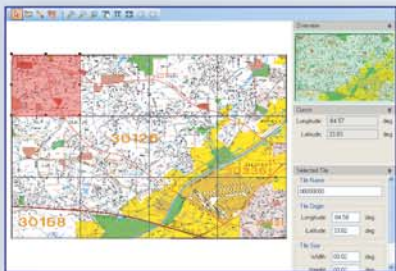


# GEOTRANSFORM DEVELOPER TOOL

Include Image Reproduction Functionality in Your Project

## POWERFUL, RELIABLE, ACCURATE AND FAST!

It couldn't be simpler to use the industry leading reprojection and transformation tool. Just think of the cost and hassle of reinventing the wheel! GeoTransform 6.0 is a fully object-oriented Class Library for software programmers using Visual Basic, C++, Delphi, PowerBuilder, C++ Builder, and other Windows development tools that will save your company time-to-market and production costs.



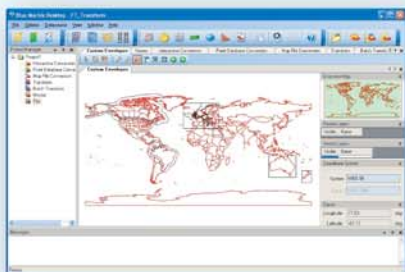
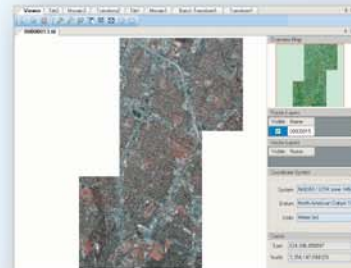
## THE MOST COMPREHENSIVE DATA SOURCE AVAILABLE

- XML Based
- Over 3500 pre-defined projected coordinate systems
- Over 1200 datum shifts
- Over 400 horizontal datums
- Over 80 various unit definitions
- A dozen vertical datums (necessary for LiDAR transformations)
- Full matches to ESRI, MapInfo, Autodesk and many more
- Define your own coordinate systems!



## ENABLES ACCURATE AND POWERFUL RASTER FORMAT, REPROJECTION AND RESAMPLING SUPPORT

- Supports read and write of dozens of industry standard raster formats including ESRI, MapInfo, MrSID, Jpeg 2000 and much more.
- Includes image resampling methods such as nearest neighbor, bilinear interpolation, and cubic convolution.
- Create referencing, raster transformation, reprojection, image tiling, mosaicking and compression in your application.



## PROGRAMMATIC CAPABILITIES

Reference file coordinate conversion on the reference file itself. Re-reference programmatically to convert the reference to a new coordinate system without doing a transform of the image. Clip to polygon output write for Shape files. You can use a shape file to define polygon area definition for the output of the raster transformation. These shape files must have only one polygon in it.

## FLEXIBLE DISTRIBUTION LICENSING

Our business model provides the flexibility that you demand. Developers must complete a simple, two-page License Agreement specifying the deployment of their application to end users. License fees quotes are based on how your software is installed and used. Internal applications, commercial products, web-based solutions are all available. Contact us for details!

**ORDER TODAY:**

You can order and download GeoTransform from our website at [WWW.BLUEMARBLEGEO.COM](http://WWW.BLUEMARBLEGEO.COM)  
Or call: (207)582.6747 800.616.2725 (U.S. & CANADA ONLY)



# BLUE MARBLE GEOGRAPHICS

WHERE GIS DATA CONVERSION SOLUTIONS ARE BORN

397 WATER STREET, SUITE 100, GARDINER, MAINE 04345 USA 800.616.2725 FAX: 207.582.7001

LATITUDE 44 13' 47.53" N LONGITUDE 69 46' 29.11" W

[WWW.BLUEMARBLEGEO.COM](http://WWW.BLUEMARBLEGEO.COM)

## FEATURES

### KEY FEATURES

- High Accuracy Raster Image Transformation
- Support for all major Geo-Referencing formats
- Build powerful processing and analysis tools
- Raster Mosaicking, Tiling and clipping
- Comprehensive Coordinate System Support
- User Interface Dialogs
- Support of PRJ, WKT, MAP, and TAB Files
- Fully Object Oriented and open architecture

## DATA FILE FORMATS

### SUPPORT INPUT IMAGE FILE FORMATS

- ARC Digitized Raster Graphics (\*.img, \*.ovr)
- BIL/HDR Raster Dataset (\*.bil)
- Bitmap Files (\*.bmp)
- BSQ Files (\*.bsq)
- Compressed ARC Digitized Raster Graphics
- ER Mapper Compressed Wavelet (\*.ecw)
- Graphics Interchange Format (\*.gif)
- JPEG (\*.jpg)
- JPEG 2000 (\*.jp2)
- LizardTech MrSID (\*.sid)
- Portable Network Graphics (\*.png)
- BSB v3 - KAP
- TIFF and GeoTIFF (\*.tif)

### SUPPORT OUTPUT IMAGE FILE FORMATS

- Bitmap Files (\*.bmp)
- JPEG (\*.jpg)
- JPEG 2000 (\*.jp2)
- LizardTech MrSID (\*.sid)
- Portable Network Graphics (\*.png)
- TIFF and GeoTIFF (\*.tif)

### IMAGE REFERENCE FORMATS

- Blue Marble (RSF)
- BIL/HDR Reference Files (.HDR)
- World files (various file extensions)
- MapInfo Raster (TAB)
- ER Mapper (ERS)
- Internal Referencing (GeoTiff, MrSID, JP2, CADRG, ADRG, DOQQ, etc.)

## WHAT'S INSIDE

### IMAGE TRANSFORMATION MODELS

- Affine (minimum three points)
- 1st Order Polynomial (minimum four points)
- 2nd Order Polynomial (minimum six points)
- 3rd Order Polynomial (minimum ten points)
- 4th Order Polynomial (minimum fifteen points)
- 5th Order Polynomial (minimum twenty-one points)

### DATUM TRANSFORMATION METHODS

18 Datum Shift Methods such as 7 parameter (coordinate frame rotation or position vector rotation), Moledensky Badekas 10 parameter, NTV2, HARN, etc.

## MAP PROJECTIONS

- Aitoff
- Alaska 27
- Albers Equal Area
- Azimuthal Equal Area
- Azimuthal Equidistant
- Behrmann
- Belgium 72
- Bipolar Oblique Conformal Conic
- Bonne
- Cassini
- Craster Parabolic
- Danish System 34
- Danish System 34 1999
- Double Stereographic
- EckertI, EckertII, EckertIII
- EckertIV, EckertV, EckertVI
- Egysges Orszagos Vetulet
- Equal Area Cylindrical
- Equidistant Conic
- Equidistant Cylindrical
- European Stereographic
- Fuller
- Gall Stereographic
- Gnostic
- Goode Homolosine
- Guam 27
- Hammer Aitoff
- Hotine Oblique Mercator
- Hotine Oblique Mercator 1pt
- Hotine Oblique Mercator 1pt Method2 (continued)

## MAP PROJECTIONS

(continued)

- IMW Polyconic
- Krovak
- Laborde
- Lambert 27
- Lambert Conformal Conic
- Lambert Conformal Conic Extended
- Lambert Tangent
- Loximuthal
- McBryde Thomas Flat Polar Quartic
- Mercator
- Military Grid Reference System
- Miller Cylindrical
- Mollweide
- New Zealand Map Grid
- Oblique Mercator Azimuth
- Oblique Mercator Two Points
- Orthographic
- Perspective Conic
- Polar Azimuthal Equal Area
- Polar Equidistant
- Polar Stereographic
- Polyconic
- Quartic Authalic
- Robinson
- Sinusoidal
- Space Oblique Mercator
- Stereographic
- Stereographic 70
- Swiss Oblique Mercator
- Tilted Perspective
- Times
- Transverse Mercator
- Transverse Mercator 27
- Transverse Mercator Extended
- Transverse Mercator Snyder
- Transverse Mercator South Oriented
- Two Point Fit
- Universal Transverse Mercator
- Van Der Grinten
- Van Der Grinten IV
- V and H
- Vertical Perspective
- Winkel I
- Winkel II
- Winkel Tripel



# BLUE MARBLE GEOGRAPHICS

WHERE GIS DATA CONVERSION SOLUTIONS ARE BORN

397 WATER STREET, SUITE 100, GARDINER, MAINE 04345 USA 800.616.2725 FAX: 207.582.7001  
LATITUDE 44 13' 47.53" N LONGITUDE 69 46' 29.11" W

WWW.BLUEMARBLEGEO.COM