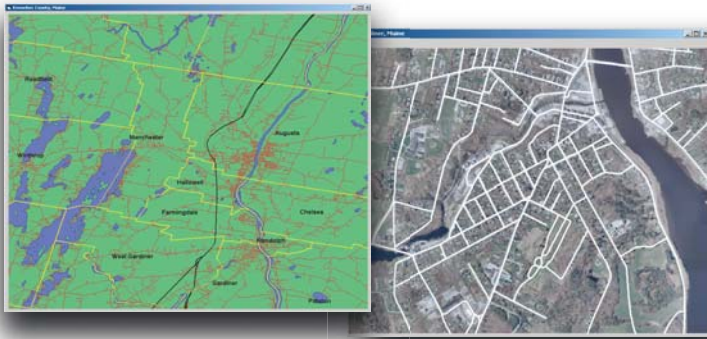


GeoObjects®

Map Display and Translation Software Kit for Developers!



Display Raster files in your GeoObjects app!

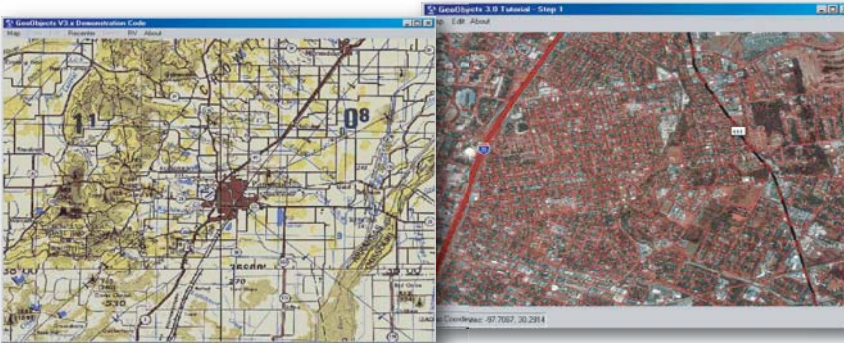
New Vector Formats supported

MrSID, ECW, JPEG2000, JPEG, BMP, TIFF, GeoTIFF, BSB v3.x and more!

S-57 Charts, TIGER/Line files, AutoCAD 2005

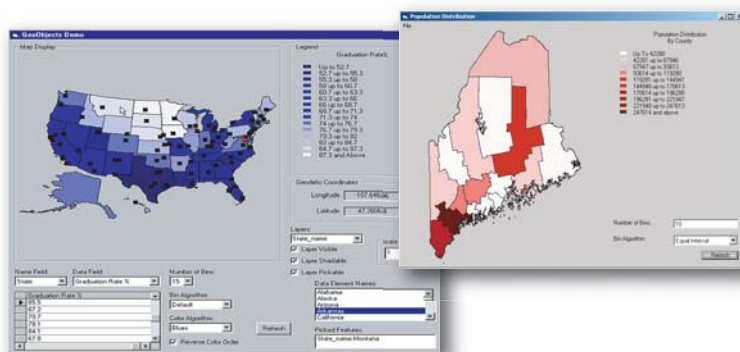
What is GeoObjects®?

GeoObjects® is a collection of high-performance controls for spatial data access and dynamic map display. Developers can streamline development time by using GeoObjects® to enhance or create a custom software application. Many GIS industry standard map files are supported. (DGN, SHP, TAB, MIF, DWG, DXF) Developers can now convert, translate and display a connected composite of map layers on-the-fly. Connect your GeoObjects® application directly to an existing Oracle® database. Spatial Data Object (SDO) geometry types now supported!



New GeoObjects® Map and Legend Controls

Developers can set map properties before creating the map, create and set coordinate systems for the map and layers, and define and set layer specific properties before adding a layer to the map. The Legend control allows the developer to display a brief textual description and corresponding colors/patterns as a visual key for the map.



GeoConvert Now Available!

Developers can now physically translate map files to other file formats and convert the coordinate system on-the-fly! Creation, Display, Editing, and Saving of new features on the Overlay Layer. Edit your Feature and Layer renditions directly!

The most comprehensive coordinate system database available!

GeoObjects® contains over **12,000** pre-defined coordinate systems. You can even define your own systems, ellipsoids, datum transformations and units.

Technical Support

Annual subscription provides direct developer assistance all year long!

Order Today!

You can order and download GeoObjects® from our website at www.bluemarblegeo.com You can also order by calling **800.616.2725**



397 Water Street, Suite 100, Gardiner, Maine 04345 USA

(800) 616-2725 Fax: (207) 582-7001

Latitude 44° 13' 47.53" N Longitude 69° 46' 29.11" W

www.bluemarblegeo.com

What's New

- ◆ Display more vector formats!
S-57 charts, TIGER/Line files
- ◆ Expanded display properties
- ◆ Updated sample documentation
- ◆ AutoCAD 2005 support
- ◆ Microstation DGN file support
- ◆ MapInfo MIF file support
- ◆ Export OverLay Layer as TAB file
- ◆ Display of Blue Marble BML layers
- ◆ User-defined datum shifts
- ◆ Oracle support for Spatial Data Object (SDO) geometry types
- ◆ GeoConvert object - allow the user to export files as MIF, TAB, DWG, DXF and SHP
- ◆ Well Known Text coordinate system definition

Data File Formats

Vector Layer Formats

- ◆ AGF - Atlas Geographic Format
- ◆ BML - Blue Marble Layer
- ◆ DBF - dBase
- ◆ DGN - up to Microstation v8.0
- ◆ DWG - up to AutoCAD 2005
- ◆ DXF - up to AutoCAD 2005
- ◆ e00 - ArcInfo Export Format
- ◆ MIF - MapInfo Interchange
- ◆ S57 - Nautical chart
- ◆ SHP - ESRI Shapefile
- ◆ TAB - MapInfo Table
- ◆ TIGER/Line
- ◆ XLS - Microsoft Excel

Raster Layer Formats

- ◆ ADRG - ARC Digitized Raster Graphic
- ◆ BIL/HDR - GeoSPOT v4
- ◆ BMP - Windows Bitmap
- ◆ BSB/KAP - (v3) NOAA Nautical Chart
- ◆ CADRG - Compressed ADRG
- ◆ ECW - ER Mapper Compressed Wavelet
- ◆ GeoTIFF - internally georeferenced TIFF
- ◆ JPEG - Joint Photographics Expert Group
- ◆ JP2 - JPEG2000
- ◆ MrSID - LizardTech
- ◆ PNG - Portable Network Graphics
- ◆ TGA - TrueVision XFile
- ◆ TIFF - Tagged Image File Format

Map Constants

- ◆ AngleUnit Constants
- ◆ BinAlgorithm Constants
- ◆ BrushStyle Constants
- ◆ ChangeEvent Constants
- ◆ ColorAlgorithm Constants
- ◆ CoordinateConversion Constants
- ◆ DatumShiftType Constants
- ◆ DataFieldType Constants
- ◆ EllipsoidDefinition Constants
- ◆ GeometryClass Constants
- ◆ GeometryType Constants
- ◆ GridShiftType Constants
- ◆ HatchStyle Constants
- ◆ HorizontalAlignment Constants
- ◆ LinearUnit Constants
- ◆ MapGridEdgeLabel Constants
- ◆ MapGridStyle Constants
- ◆ MapProjection Constants
- ◆ PenStyle Constants
- ◆ PointStyle Constants
- ◆ PrintView Constants
- ◆ ScaleMode Constants
- ◆ TextEffect Constants
- ◆ ValidDB Constants
- ◆ ValidDBType Constants
- ◆ ValidProperty Constants
- ◆ VerticalAlignment Constants
- ◆ ZoomMode Constants

Map Control Methods

- ◆ AboutBox
- ◆ AddLayer
- ◆ ClearMap
- ◆ ConvertCoordinate
- ◆ ConvertDistance
- ◆ Copy
- ◆ DeleteLayer
- ◆ DeleteImage
- ◆ DoPick
- ◆ DoPickByArea
- ◆ DoPickByRadius
- ◆ DoPickByRectangle
- ◆ DrawBMP
- ◆ FlushUserData
- ◆ GetMapScale
- ◆ GetOverlayLayer
- ◆ GetViewScaleRange
- ◆ Paste
- ◆ PrintView
- ◆ Refresh
- ◆ ReloadUserData
- ◆ ResetMap
- ◆ SaveOverlayLayer
- ◆ SetAttributeCallBack
- ◆ SetCustomDrawCallBack
- ◆ SetMapScale
- ◆ SetCenterXY
- ◆ SetViewScaleRange

GeoConvert Control

Properties

- ◆ SourceCoordSys
- ◆ SourceHasCoordSys
- ◆ Target CoordSys
- ◆ TargetHasCoordSys

Methods

- ◆ AboutBox
- ◆ CloseSourceFile
- ◆ ConvertToTarget
- ◆ OpenSourceFile

Map Control Properties

- ◆ AutoDrag
- ◆ AutoDraw
- ◆ AutoPick
- ◆ BackColor
- ◆ BinAlgorithm
- ◆ BinCount
- ◆ Bins
- ◆ Center
- ◆ Color Algorithm
- ◆ Coordinate System
- ◆ CurData X,Y
- ◆ Datafield
- ◆ DataField Type
- ◆ DataSource
- ◆ EnableContextMenu
- ◆ Images
- ◆ KeepAspect
- ◆ Layers
- ◆ MapGrid
- ◆ Map Properties
- ◆ NameField
- ◆ PickAperture
- ◆ PickedFeatures
- ◆ PickFilter
- ◆ RegionOfInterest
- ◆ RestrictedView
- ◆ ReverseColorOrder
- ◆ RotationAngle
- ◆ SaveInvisibleObjects
- ◆ ScaleFactor
- ◆ Scale Limit
- ◆ SpatialDataName
- ◆ SpatialDataType
- ◆ TotalDataExtent
- ◆ ZoomAmount
- ◆ Zoom Mode



397 Water Street, Suite 100, Gardiner, ME, 04345 USA
(207) 582-6747 Voice
(207) 582-7001 Fax