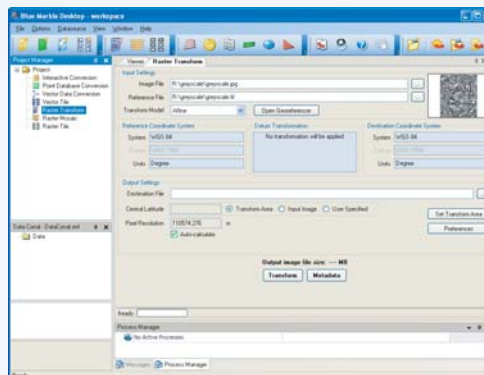
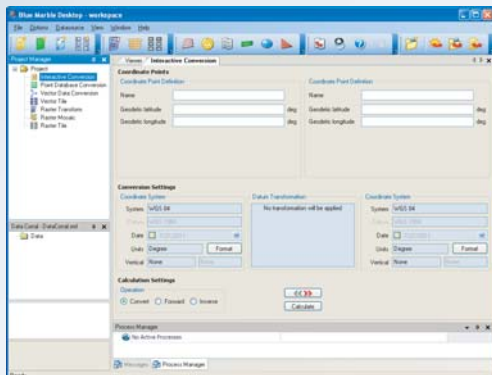


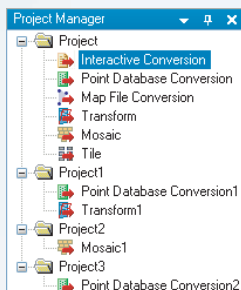
BLUE MARBLE DESKTOP®

The All-in-one Geospatial Data Conversion Platform

TRANSFORM COORDINATE, VECTOR, CAD, RASTER, 3D, LIDAR, DEMS, DTEDS AND SPATIAL DATABASES



The Blue Marble Desktop is the all in one geospatial data management platform for Blue Marble's popular data transformation tools. The Geographic Calculator, Transformer and Translator reside in the same desktop window along with the Spatial Connect module for working with spatial databases.



ENABLE GEOSPATIAL COLLABORATION ACROSS YOUR ORGANIZATION

Use the Project Manager to create/save/share jobs with other users. Switch back and forth between multiple conversion projects. Create multiple jobs in a workspace and batch them together to run at one time. Enhanced workspace and settings interfaces for more streamlined batch data processing.

ENHANCED ESRI EXTENSION

Extend the geodetic power of ArcMap. Users can now define coordinate transformations in ArcMap by area of use, through both the Esri Projection Engine and Blue Marble's GeoCalc engine.

IMPROVED ENVELOPING SYSTEM

Desktop now provides users with the ability to define custom polygon envelopes through the import of a vector file, as well as provide the ability to filter coordinate systems, and horizontal datums based on data source envelopes, and custom polygon envelopes. Enhanced Envelope logic preserves systems that cross the International Dateline.

Tools for Working with DEMs & DTEDs in the Transformer

New Web Mapping Service (WMS) interface for remote data connections in all data viewer windows

- Support for over 60 Geospatial formats
- Well Known Text and PRJ coordinate system matching now preserves base geodetic coordinate system references
- Updated Audit Trail now tracks the current Desktop user with all changes
- Enhanced Esri plug-in to filter based on coordinate system and datum in addition to datum shifts and to quickly import and transform data using the Esri projection engine in the toolbar extension
- Metadata Editor tool with read and write support for XML based metadata files, including those in standard Esri format
- Support for accuracy tags to aid in selection of the best available transformation
- Improved performance of batch processing for large jobs and projects
- Support for deprecation tags to allow users to see when an object was removed from EPSG, and to allow administrators to deprecate custom objects
- Write support for GML coordinate systems
- Updates to core GeoCalc dialogs to allow users to view and edit all base coordinate system objects more efficiently
- Updated support for LAS datasets
- DEM support, including the addition of Shuttle Radar Topography Mission (SRTM) height format
- Full support for EPSG version 7.9 database

ORDER TODAY:

You can order and download Blue Marble Desktop from our website at WWW.BLUEMARBLEGEO.COM
Or call: 207.582.6747 800.616.2725 (U.S. & CANADA ONLY)



BLUE MARBLE GEOGRAPHICS

MIND THE GAP BETWEEN WORLD AND MAP

397 WATER STREET, SUITE 100, GARDINER, MAINE 04345 USA
800.616.2725 / +1.207.582.6747 / FAX: 207.582.7001
44° 13' 49.50" N, 69° 46' 32" W, WGS84

WWW.BLUEMARBLEGEO.COM